

# COMPARTMENT TANK UPGRADE

## IN SITU RETROFIT FOR FIBERGLASS TANKS



As the fuel storage market continues to evolve, capacity continues to expand. The typical site used to store 10,000-20,000 gallons but now average c-stores are being designed with 40,000-60,000 gallons using fiberglass tanks with multiple compartments in each. This gives the site owner the flexibility to offer a combination of fuels and fluids including diesel, additives, biofuels, even DEF (diesel exhaust fluid).

### UPGRADING EXISTING TANKS

Replacing tanks is a significant investment not only in direct expense but also in dispenser downtime. Containment Solutions Services offers an in situ Compartment Tank Upgrade for existing underground tanks. Our highly trained staff will enter the buried tank and fabricate a bulkhead separating one compartment into two, or three, or more. Modifying existing tanks can expand the available product offering for a fraction of the cost of tank replacement. The new multi functional tank will be operational in a few days and compartmentalizing an existing CSI fiberglass tank will not affect the tank warranty.

### COMPATIBILITY

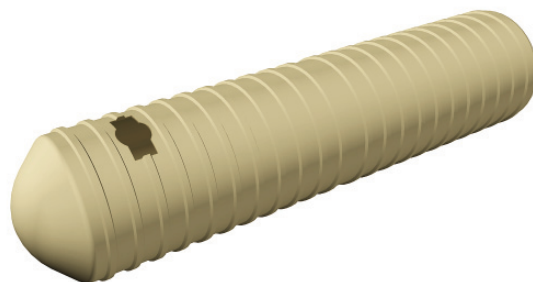
Any fiberglass tank can be upgraded with a bulkhead even competitor tanks. The existing tank warranty will still dictate the fuel compatibility for the tank itself but the bulkhead is fully compatible with all fuels approved for use in a CSI tank.

### MULTI COMPARTMENT UPGRADE ADVANTAGES:

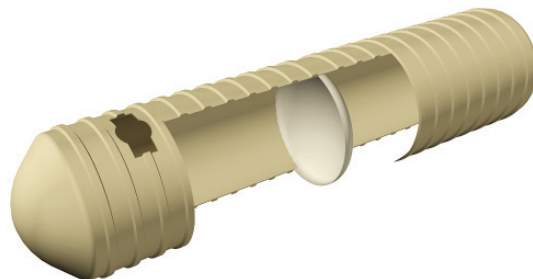
- Eliminates costly tank replacement and downtime
- Compatible with all fuels in the standard tank warranty including ethanol blends and ULSD
- Fully utilize storage area to maximize profitability
- Single and double-wall bulkhead models available
- Service can be added to any fiberglass storage tank, even competitor tanks
- Trained & certified CSI employees assemble bulkheads in situ

## THE UPGRADE PROCESS:

- Step 1 Access opening(s) for tank entry created and later finished into manway(s).
- Step 2 Tank is inspected and prepared for bulkhead installation.
- Step 4 Pre-fabricated panels are installed and bonded together forming a complete bulkhead or two bulkheads with an annular space if installing a double-wall model.
- Step 5 Access openings are closed, manways are installed on each compartment. Collars and additional fittings can also be installed upon request.
- Step 6 Bulkhead, manways, and any fittings installed are tested.
- Step 7 New calibration charts are available for all accessible compartments in the tank.



Tank access opening is cut for entry into an underground tank.



Bulkhead is installed separating the existing tank into multiple compartments.



Upon completion manways and collars are added to each compartment.

## CSI TECHNICIANS ARE CERTIFIED IN THE FOLLOWING:

- Confined Space Entry
- Scaffolding and Fall Protection
- HAZMAT/DOT General Awareness
- Hazardous Waste Site Supervisor
- Hazardous Waste Operations and Emergency Response
- Hazardous Communication Safety Training

## CONTAINMENT SOLUTIONS SERVICES (800) 822-1997

### Additional Services:

While CSI technicians are completing your compartment tank upgrade, they can also provide services like the BTU® (biofuel tank upgrade) to future proof your tank and install accessories such as tank sumps to provide watertight access to grade. Standard sizes include 42", 48", and 54" diameters in either round or polygon designs.

- BTU® (Biofuel Tank Upgrade)
- TANK SUMPS

