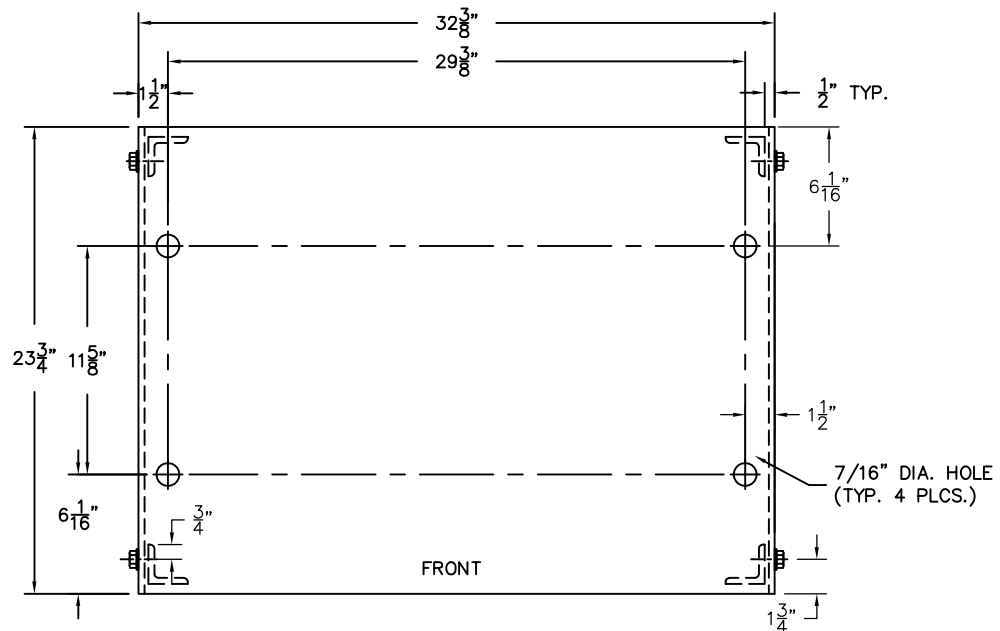
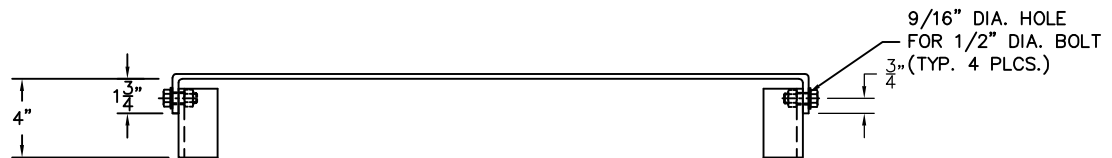


ASTRA PUMP BRACKET



TOP VIEW



ELEVATION

NOTES:

1. PUMP BRACKET ASSEMBLY SHALL BE CARBON STEEL.
2. ALL FASTENERS SHALL BE STAINLESS STEEL.
3. PUMP BRACKET SHALL BE WELDED TO TANK.
4. CUT LEGS TO FIT CONTOUR OF TANK AS REQUIRED.
5. EXTERIOR COATING SHALL BE SAME AS TANK, UNLESS NOTED.

PRODUCT CODE	GALLONS	DESCRIPTION	OVERALL SIZE	SHIP WT.
PBB015		TOP MOUNT PUMP BRACKET (GASBOY 9822/9823)	24"L X 31"W X 4"H	

CONTAINMENT SOLUTIONS®

THIS DRAWING AND DESIGN SHOWN HEREIN IS THE PROPERTY OF CONTAINMENT SOLUTIONS. USE OR COPIES THEREOF CANNOT BE MADE WITHOUT WRITTEN CONSENT.

CUSTOMER NAME: _____
APPROVED BY: _____ DATE: _____

DRAWN BY: D. ROVANG DATE DRAWN: 01-01-14
 DWG NUMBER: PBB015 SCALE:
 REV: REV BY: DATE: SHEET: 1 OF 1