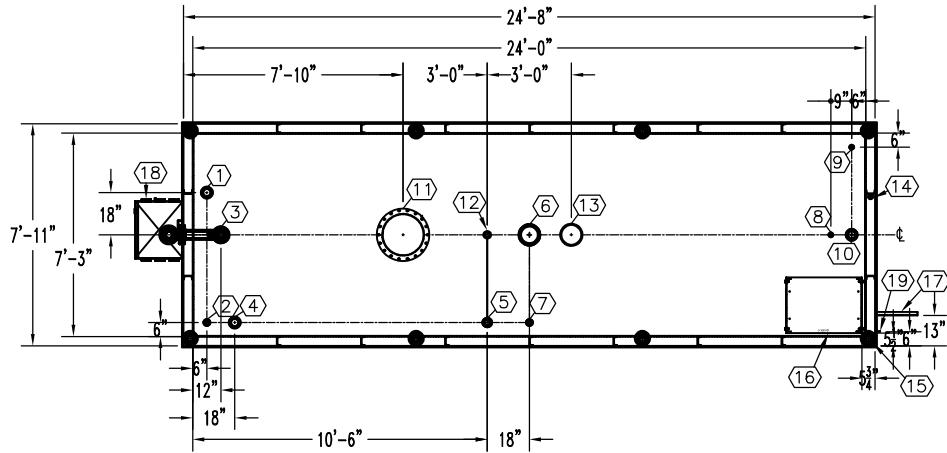
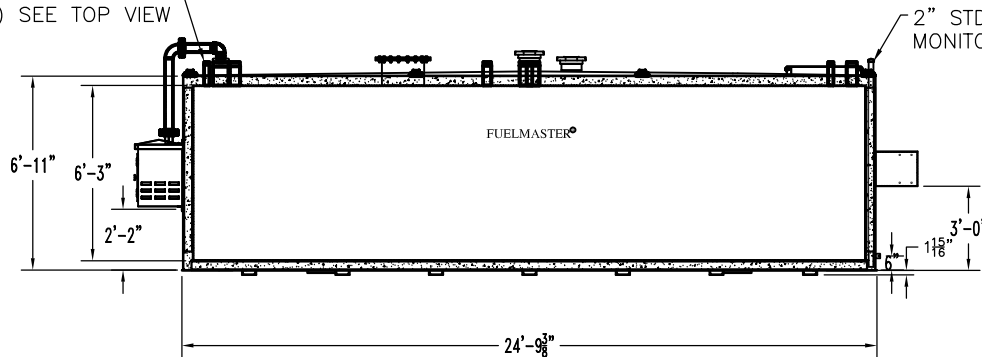


NOTE:
OVERALL SHIPPING DIMENSION: 28'-8" L X 8'-6" W X 9'-4" H



TOP VIEW

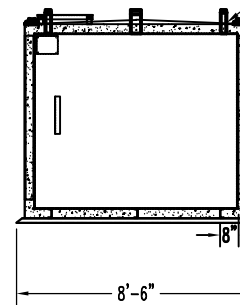
THREADED CONNECTION
(TYP.) SEE TOP VIEW



ELEVATION

2" STD. PIPE FOR
MONITOR ACCESS

SEAL WELD ALL
FITTINGS AND TANK



END VIEW

ITEM	SIZE	SUGGESTED FUNCTION
1	4"	PHASE 1 VAPOR RECOVERY/SPARE
2	2"	CLOCK LEVEL GAUGE
3	6"	FILL W/3" FILL LIMITER
4	4"	ELECTRONIC LEVEL GAUGE (OPTIONAL)
5	3"	PRIMARY WORKING VENT W/RISER PIPE
6	8"	PRIMARY TANK EMERGENCY VENT
7	2"	SPARE
8	2"	SUCTION PUMP
9	2"	HIGH LEVEL ALARM
10	4"	SPARE
11	18"	ABOVE LIQUID MANHOLE, DWG."MHB001"
12	2"	SECONDARY WORKING VENT
13	8"	SECONDARY CONTAINMENT EMERGENCY VENT
14	2"	SECONDARY MONITOR PIPE
15	4"	FIRE RATED MATERIAL FILL
16	N/A	9822 DISPENSER BRACKET, DWG."PBB015"
17	N/A	DISPENSER BRACKET, DWG."DSB001"
18	3" PIPE	3QBB MORRISON REMOTE BOX
19	2" X 2"	GROUND CLIP, DWG."MCB004"

TANK SPECIFICATIONS

VENTING CAPACITY: PRIMARY TANK - 392,000 CUBIC FEET PER HOUR
SECONDARY TANK - 428,000 CUBIC FEET PER HOUR

MATERIAL: PRIMARY TANK - 1/4" THICK
SECONDARY TANK - 3/16" THICK

4" SPACE BETWEEN
INNER & OUTER TANKS
FILLED WITH LIGHT WEIGHT
FIRE-RATED MATERIAL

PRODUCT CODE	GALLONS	DESCRIPTION	OVERALL SIZE	SHIP WT.
FMAA108MVS001	8,000	U/L-2085 ABOVE GROUND VAULT TANK W/FUEL SYSTEM	24'-8" L X 7'-11" W X 7'-1" H	34,250 LBS.

CONTAINMENT SOLUTIONS®

THIS DRAWING AND DESIGN SHOWN HEREIN IS THE PROPERTY OF CONTAINMENT SOLUTIONS. USE OR COPIES THEREOF CANNOT BE MADE WITHOUT WRITTEN CONSENT.

CUSTOMER NAME: _____
APPROVED BY: _____ DATE: _____

DRAWN BY: D. ROVANG	DATE DRAWN: 01-01-14
DWG NUMBER: 5103550S	SCALE: 1:84
REV: B	REV BY: RSO DATE: 01-01-19 SHEET: 1 OF 1