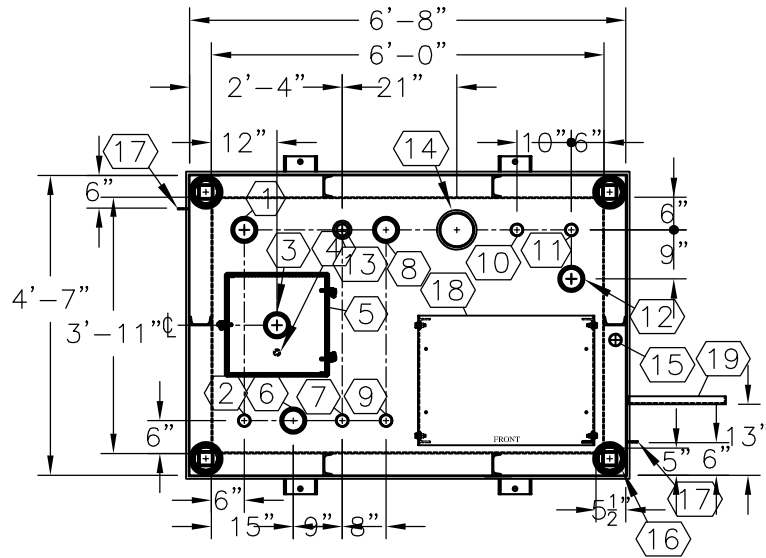


NOTE:
OVERALL SHIPPING DIMENSION: 8'-5" L X 5'-2" W X 6'-1" H



TOP VIEW

ITEM	SIZE	SUGGESTED FUNCTION
1	4"	PHASE 1 VAPOR RECOVERY/SPARE
2	2"	CLOCK LEVEL GAUGE
3	4"	FILL W/2" FILL LIMITER
4	1/2"	DRAIN FOR SPILLBOX
5	15 GAL.	SPILL BOX, DWG."SBB001"
6	4"	ELECTRONIC LEVEL GAUGE (OPTIONAL)
7	2"	PRIMARY WORKING VENT W/RISER PIPE
8	4"	PRIMARY TANK EMERGENCY VENT
9	2"	SPARE
10	2"	SUCTION PUMP
11	2"	HIGH LEVEL ALARM
12	4"	SPARE
13	2"	SECONDARY WORKING VENT
14	6"	SECONDARY CONTAINMENT EMERGENCY VENT
15	2"	SECONDARY MONITOR PIPE
16	4"	FIRE RATED MATERIAL FILL
17	2" X 2"	GROUND CLIP, DWG."MCB004"
18	N/A	9822 DISPENSER BRACKET, DWG."PBB015"
19	N/A	DISPENSER BRACKET, DWG."DSB001"

TANK SPECIFICATIONS

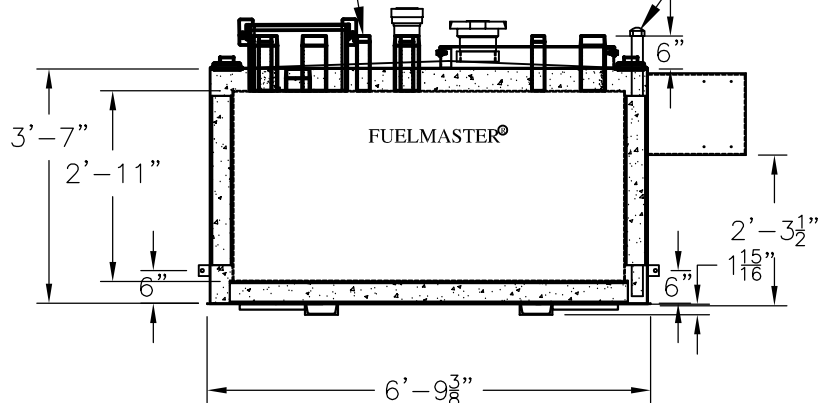
VENTING CAPACITY: PRIMARY TANK - 94,800 CUBIC FEET PER HOUR
 SECONDARY TANK - 126,000 CUBIC FEET PER HOUR

MATERIAL: PRIMARY TANK - 3/16" THICK
 SECONDARY TANK - 3/16" THICK

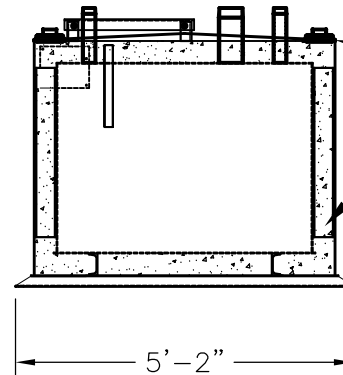
SEAL WELD ALL FITTINGS AND TANK
 4" SPACE BETWEEN INNER & OUTER TANKS FILLED WITH LIGHT WEIGHT FIRE-RATED MATERIAL

THREADED CONNECTION (TYP.) SEE TOP VIEW

2" STD. PIPE FOR MONITOR ACCESS



ELEVATION



END VIEW

PRODUCT CODE	GALLONS	DESCRIPTION	OVERALL SIZE	SHIP WT.
FMAA1500VS001	500	U/L-2085 ABOVE GROUND VAULT TANK W/FUEL SYSTEM	6'-8" L X 4'-7" W X 3'-9" H	6,100 LBS.

THIS DRAWING AND DESIGN SHOWN HEREIN IS THE PROPERTY OF CONTAINMENT SOLUTIONS. USE OR COPIES THEREOF CANNOT BE MADE WITHOUT WRITTEN CONSENT.

CUSTOMER NAME: _____
APPROVED BY: _____ DATE: _____

CONTAINMENT SOLUTIONS®

DRAWN BY: D. ROVANG DATE DRAWN: 01-01-14
 DWG NUMBER: 5103541S SCALE: 1:36
 REV: B REV BY: RSO DATE: 01-01-19 SHEET: 1 OF 1