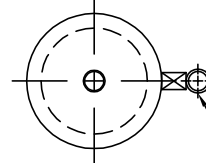
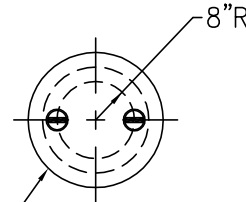
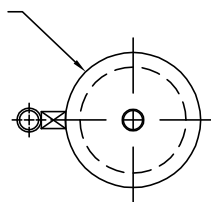


SHELL CODES: 2-E4S101S2

22" FLGD. MANWAY
w/1-4" NPT FTGS.
(2 TYP.)

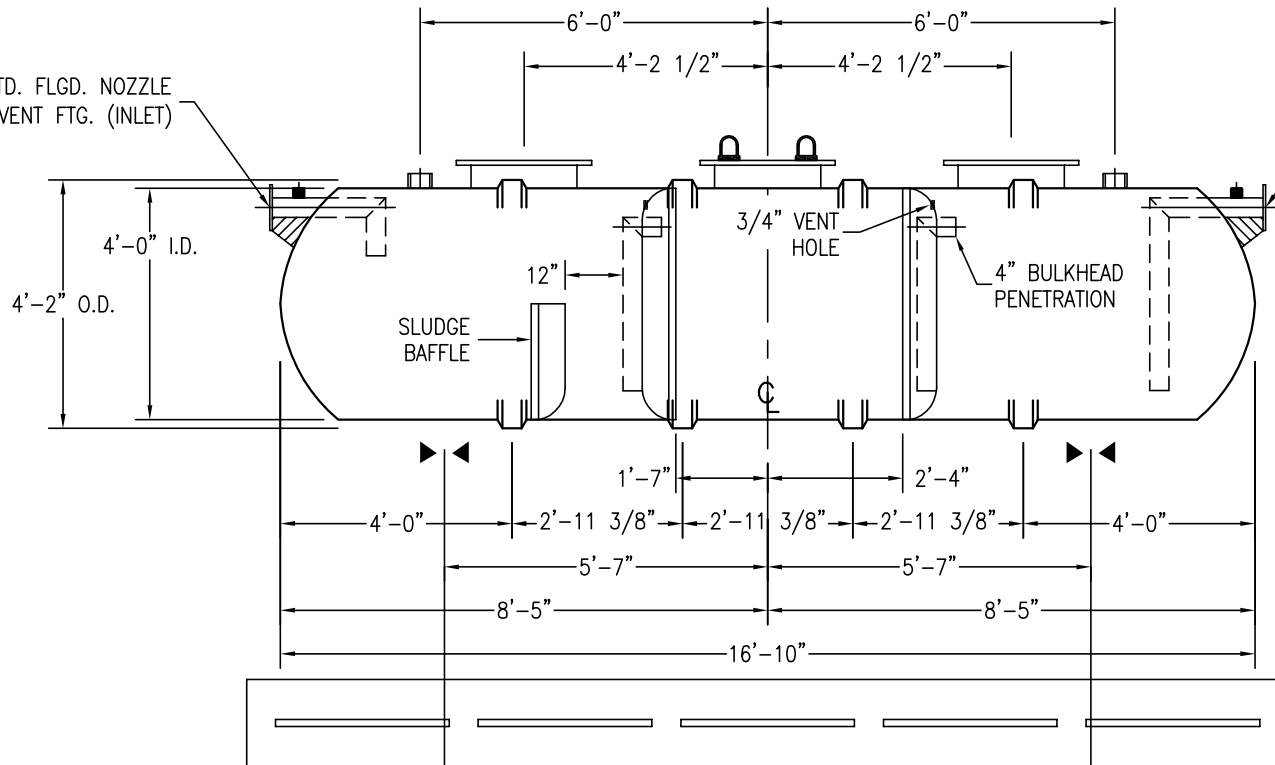


4" NPT FTGS. (2 TYP.)

22" FLGD. MANWAY
w/2-4" NPT FTGS.
& 2 LIFT LUG PLUGS

4" TANGENTIALLY MTD. FLGD. NOZZLE
w/ 2" FRP VENT FTG. (INLET)

4" TANGENTIALLY MTD. FLGD. NOZZLE
w/ 2" FRP VENT FTG. (OUTLET)



OPTIONAL 18"x 8"x 18' DEADMAN

NOTES:

- ☒ HOLD DOWN STRAP CLIP
- ▶◀ HOLD DOWN STRAP LOCATION
- TYPE "13" LIFT LUG - SD
- TYPE "13" LIFT LUG - HD

SWT (4')-1500 CSI-3B INT		DATE: 1/1/2014
		DRAWN BY: K.A.SOEDER
CONTAINMENT SOLUTIONS	CAPACITY: SLUDGE/TOTAL 45/1514	REVISED:
	WEIGHT: DRY/WET 800	DWG NUMBER: 41V-3BSW