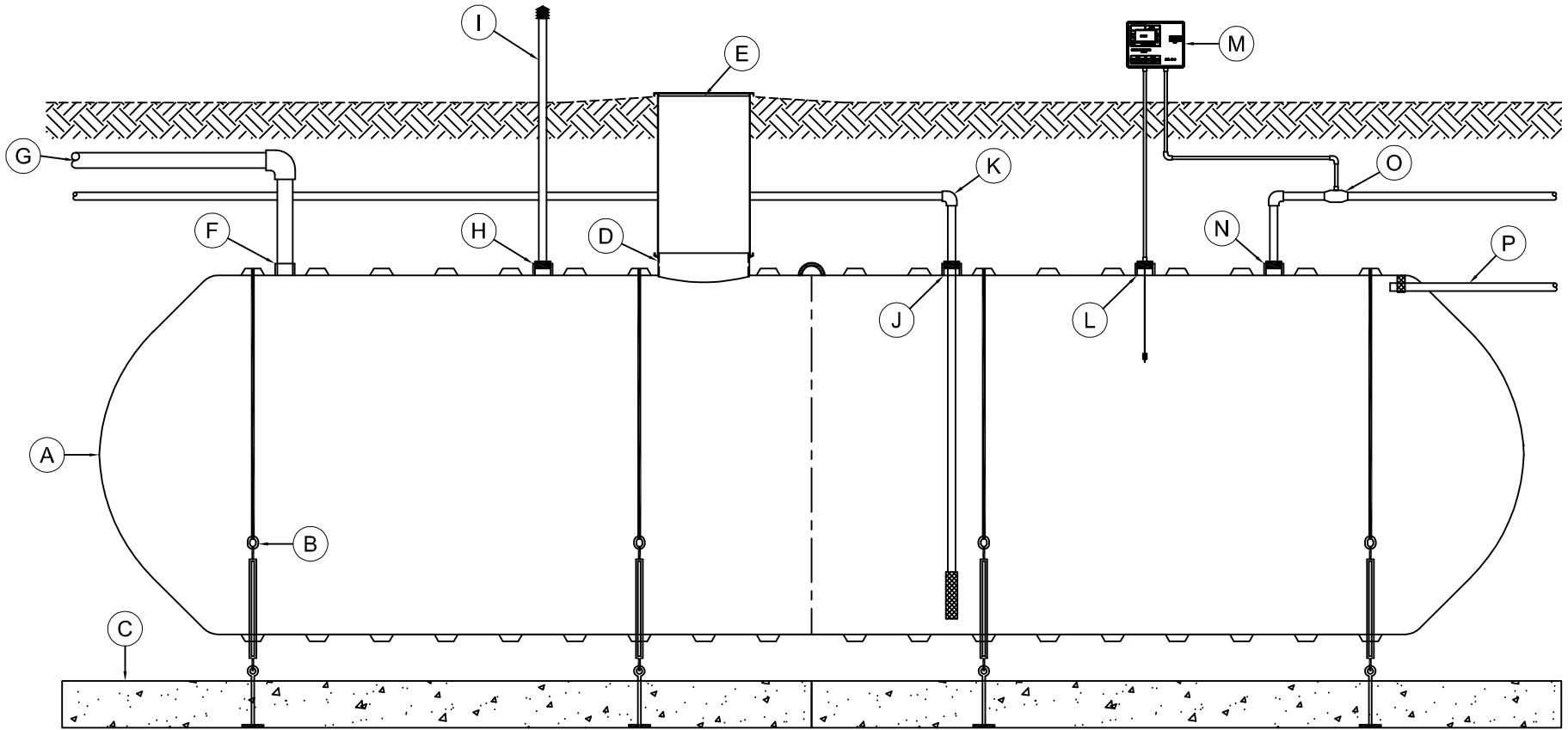


| MARK | EQUIPMENT LISTING AND SUPPLIER | CSI | CUSTOMER | MARK | EQUIPMENT LISTING AND SUPPLIER | CSI | CUSTOMER |
|------|---|-----|----------|------|---|-----|----------|
| A | C.S.I. SINGLE WALL FIBERGLASS TANK (1000 to 50,000 GALS) | X | | I | 2" TANK VENT PIPE w/ RAIN CAP AND SCREEN | | X |
| B | C.S.I. FRP HOLD DOWN STRAP & TURNBUCKLE ASSEMBLY | X | | J | 4" NPT FITTING w/ 4"x 2" DOUBLE TAP REDUCER | X | |
| C | C.S.I. PRECAST DEADMAN ANCHOR WITH EYEBOLTS | X | | K | 2" PUMP SUPPLY w/ SUCTION PIPE & STRAINER | | X |
| D | 23.5" FRP TANK ACCESS COLLAR w/ EXTERNAL ADHESIVE CHANNEL | X | | L | 4" NPT FITTING w/ REDUCER | X | |
| E | 24" FRP ACCESS RISER w/ LOCKING COVER | X | | M | CONTROL PANEL - AUXILLARY FLOW CONTROL & LOW LEVEL FLOAT SENSOR | | X |
| F | 4" NPT FITTING | X | | N | 4" NPT FITTING w/ REDUCER | X | |
| G | 4" INLET PIPE FROM ROOF COLLECTION SYSTEM | | X | O | 2" AUXILLARY FILL CHECK VALVE | | X |
| H | 4" NPT FITTING w/ 4"x 2" REDUCER | X | | P | 2" STUB-OUT - TANK OVERFLOW | X | |



TYPICAL ILLUSTRATION DRAWING
 LARGE CAPACITY RAINWATER HARVESTING
 "OPTION - A"

THIS DRAWING IS FOR ILLUSTRATIVE PURPOSES ONLY. IT IS THE RESPONSIBILITY OF THE PURCHASER AND/OR ENGINEER TO DESIGN A SYSTEM IN COMPLIANCE WITH ALL GOVERNING MUNICIPAL CODES.

