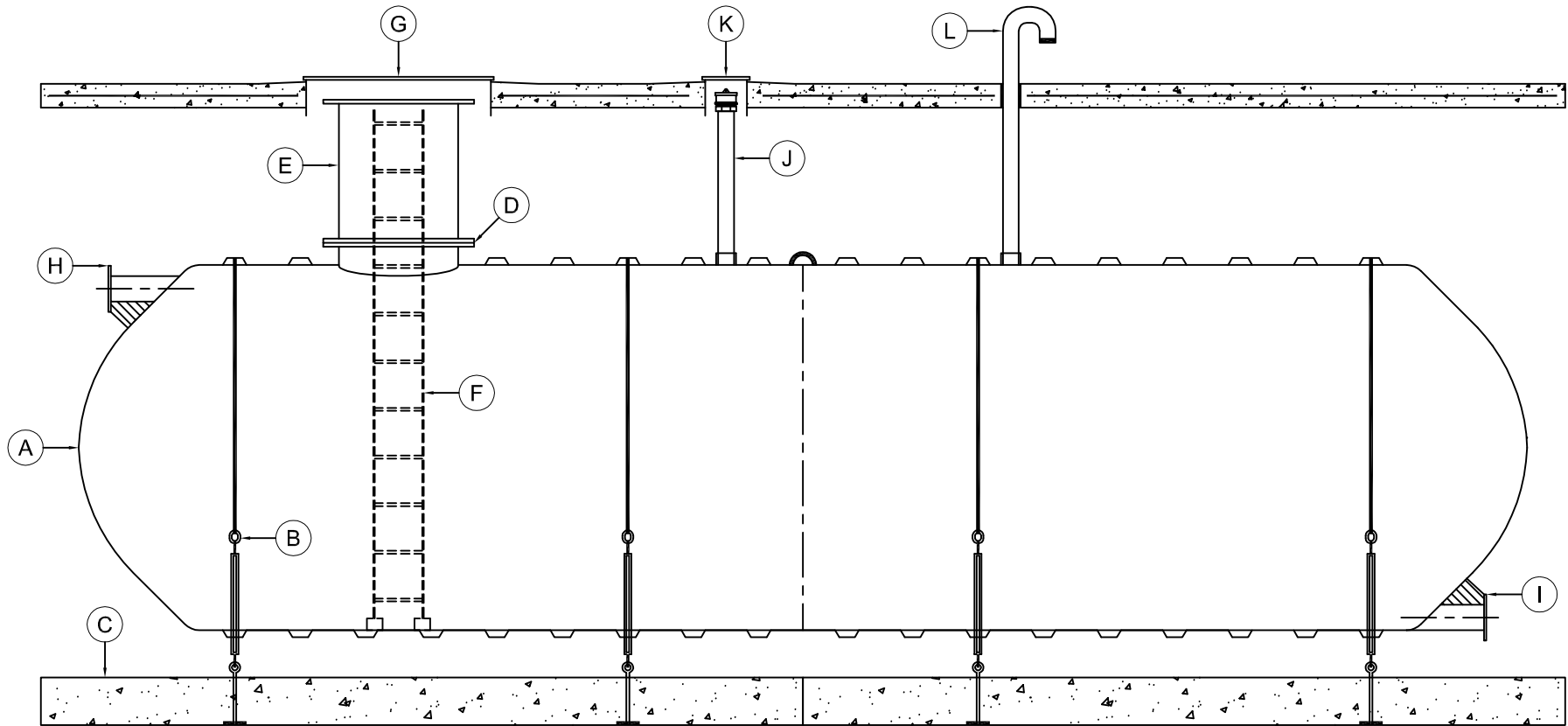


MARK	EQUIPMENT LISTING AND SUPPLIER	CSI	CUSTOMER	MARK	EQUIPMENT LISTING AND SUPPLIER	CSI	CUSTOMER
A	C.S.I. NSF-61 CERTIFIED SINGLE WALL FIBERGLASS TANK	X		G	48" DIAMETER MANHOLE AND COVER		X
B	C.S.I. FRP HOLD DOWN STRAP & TURNBUCKLE ASSEMBLY	X		H	6" TANGENTIALLY MOUNTED FLANGED NOZZLE - INLET	X	
C	C.S.I. PRECAST DEADMAN ANCHOR WITH EYEBOLTS	X		I	6" TANGENTIALLY MOUNTED FLANGED NOZZLE - OUTLET	X	
D	36" FRP FLANGED MANWAY	X		J	4" NPT FITTING WITH RISER PIPE - FILL / GAUGE	X	
E	36" FRP FLANGED MANWAY EXTENSION	X		K	12" DIAMETER MANHOLE AND COVER		X
F	NFS-61 CERTIFIED FRP LADDER	X		L	4" NPT FITTING - TANK VENT	X	



THIS DRAWING IS FOR ILLUSTRATIVE PURPOSES ONLY. IT IS THE RESPONSIBILITY OF THE PURCHASER AND/OR ENGINEER TO DESIGN A SYSTEM IN COMPLIANCE WITH ALL GOVERNING MUNICIPAL CODES.

TYPICAL ILLUSTRATION DRAWING
HORIZONTAL SUPPLY POTABLE WATER
NSF-61 CERTIFIED

