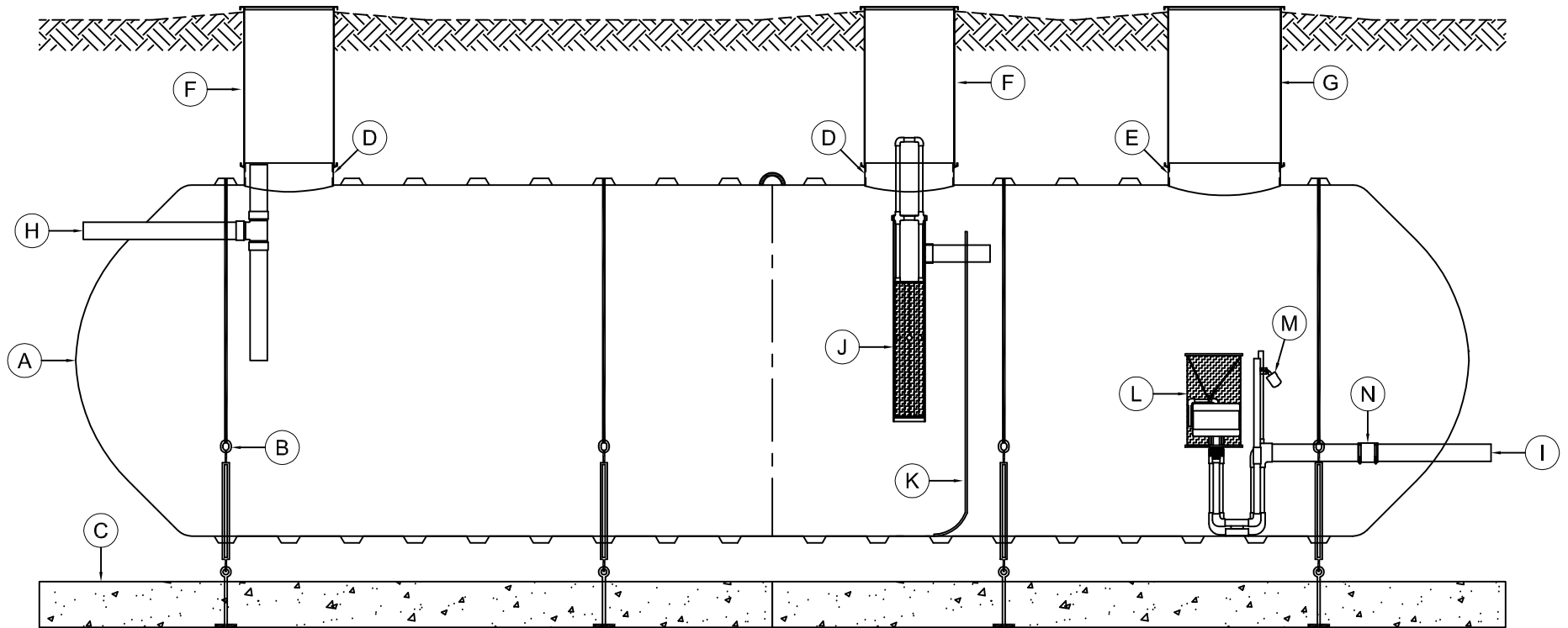


MARK	EQUIPMENT LISTING AND SUPPLIER	CSI	CUSTOMER	MARK	EQUIPMENT LISTING AND SUPPLIER	CSI	CUSTOMER
A	C.S.I. SINGLE WALL FIBERGLASS TANK	X		H	4" PVC INLET PIPING WITH SANITARY TEE	X	
B	C.S.I. FRP HOLD DOWN STRAP & TURNBUCKLE ASSEMBLY	X		I	4" PVC DOSE/EFFLUENT OUTLET	X	
C	C.S.I. PRECAST DEADMAN ANCHOR WITH EYEBOLTS	X		J	SUSPENDED EFFLUENT FILTER WITH 4" TRANSFER PIPE		X
D	23.5" FIBERGLASS COLLAR WITH TANK ACCESS OPENING	X		K	7/8" HEIGHT COMPARTMENT BAFFLE	X	
E	29.5" FIBERGLASS COLLAR WITH TANK ACCESS OPENING	X		L	4" DOSING SIPHON ASSEMBLY WITH FIBERGLASS BRACKET		X
F	24" FRP RISER WITH COVER	X		M	DOSE COUNTER FLOAT ASSEMBLY		X
G	30" FRP RISER WITH COVER	X		N	FLEXIBLE CONNECTOR		X



TYPICAL ILLUSTRATION DRAWING
 DUAL LARGE COMMERCIAL ONSITE SEPTIC
 DOSING SIPHON EFFLUENT SYSTEM

THIS DRAWING IS FOR ILLUSTRATIVE PURPOSES ONLY. IT IS THE RESPONSIBILITY OF THE PURCHASER AND/OR ENGINEER TO DESIGN A SYSTEM IN COMPLIANCE WITH ALL GOVERNING MUNICIPAL CODES.

