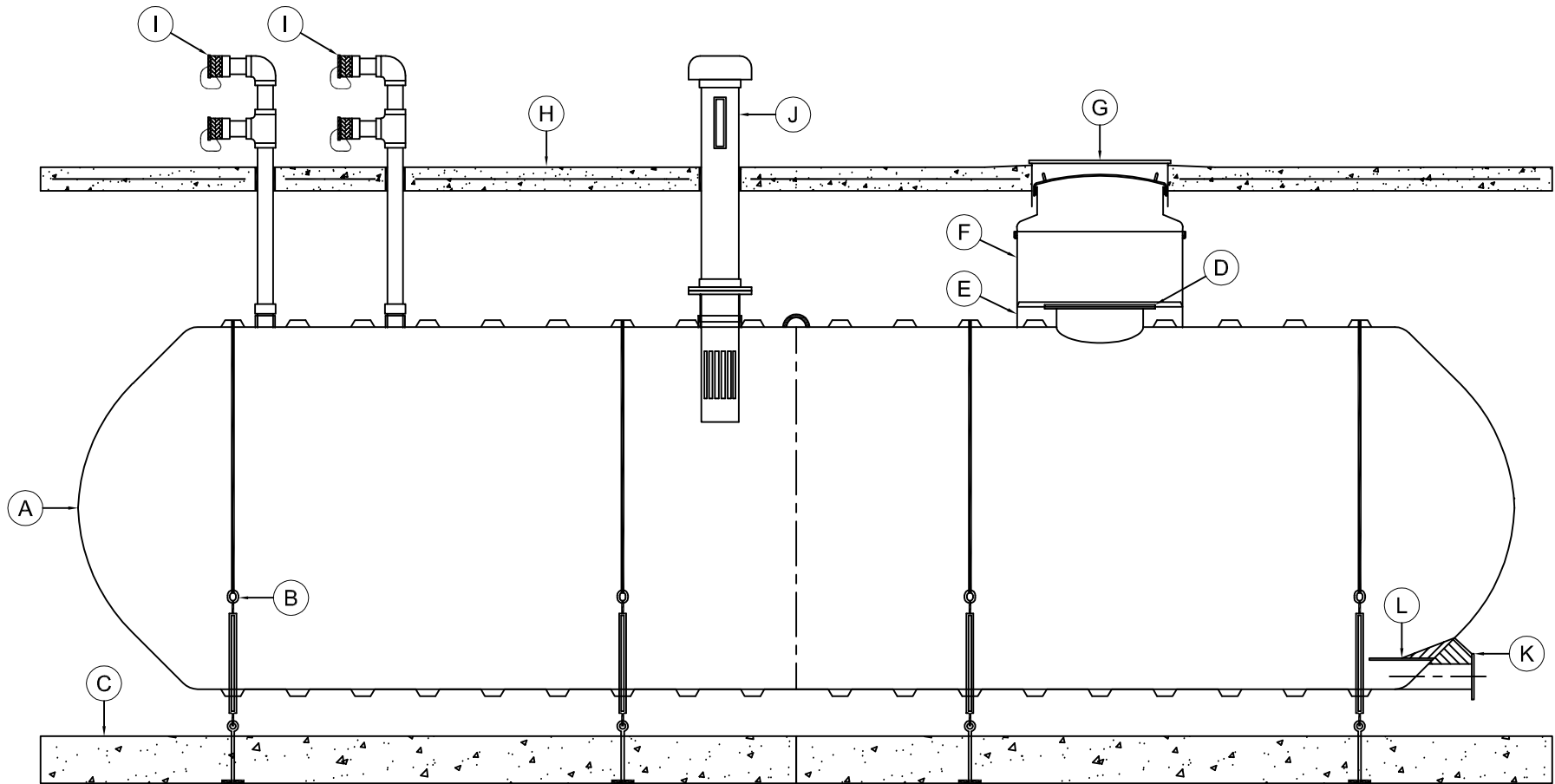


MARK	EQUIPMENT LISTING AND SUPPLIER	CSI	CUSTOMER	MARK	EQUIPMENT LISTING AND SUPPLIER	CSI	CUSTOMER
A	C.S.I. SINGLE WALL FIBERGLASS TANK	X		G	36" DIAMETER MANHOLE AND COVER		X
B	C.S.I. FRP HOLD DOWN STRAP & TURNBUCKLE ASSEMBLY	X		H	H-20 AXLE LOAD CONCRETE APRON		X
C	C.S.I. PRECAST DEADMAN ANCHOR WITH EYEBOLTS	X		I	4" NPT FTG w/ DUAL NST FILL OR RECIRCULATING POINTS	X	
D	22" FRP FLANGED MANWAY	X		J	10" NPT FITTING WITH VENT/LEVEL INDICATOR ASSEMBLY	X	
E	42" ATTACHED CONTAINMENT COLLAR	X		K	6" TANGENTIALLY MOUNTED FLANGED NOZZLE - OUTLET	X	
F	42" TANK SUMP WITH 32" I.D. OPENING	X		L	FRP ANTI-VORTEX PLATE ASSEMBLY	X	



TYPICAL ILLUSTRATION DRAWING
HORIZONTAL SUCTION FIRE PROTECTION
WATER STORAGE HOLDING SYSTEM

THIS DRAWING IS FOR ILLUSTRATIVE PURPOSES ONLY. IT IS THE RESPONSIBILITY OF THE PURCHASER AND/OR ENGINEER TO DESIGN A SYSTEM IN COMPLIANCE WITH ALL GOVERNING MUNICIPAL CODES.

