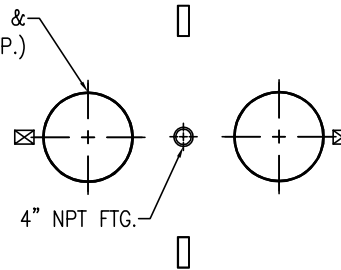


FLOWTITE PRODUCTS

SEPTIC/WASTE WATER

NOTE: CUSTOMER SUPPLIED "ASTM C-1644" APPROVED FLEXIBLE PIPING COUPLING REQUIRED ON TANGENTIALLY MTD. NOZZLES, & PIPES

(24") 23-1/2" O.D. FRP ACCESS COLLAR w/ADHESIVE CHANNEL & 22 1/2" TANK TOP CUT-OUT (2 TYP.)



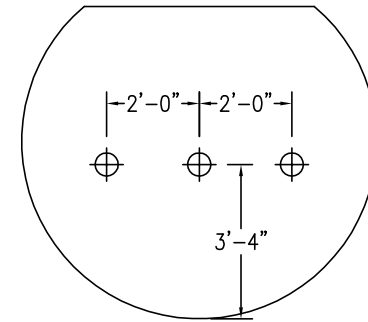
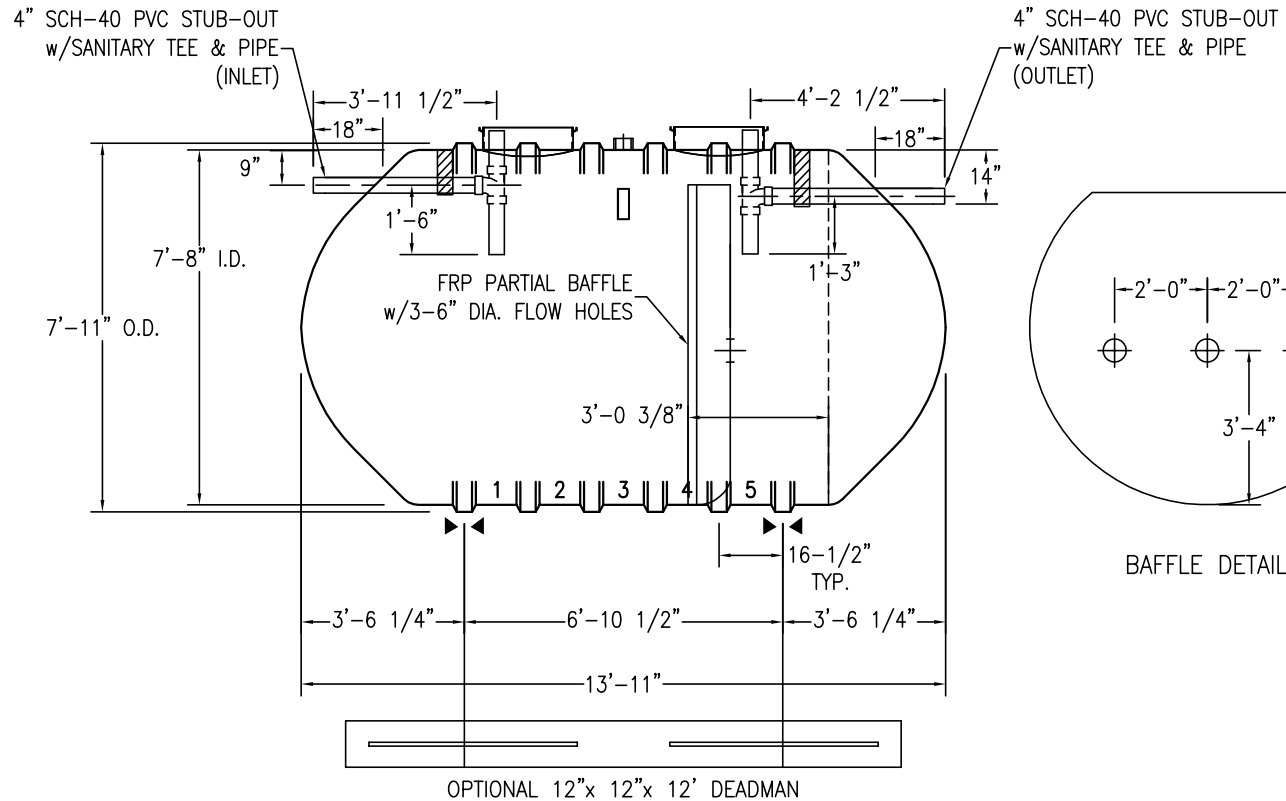
SHELL CODES: 1-E8S06SD, 1-E8SECSD



THIS IS AN IAPMO APPROVED TANK THE ONLY CHANGE ALLOWED TO THIS TANK IS TO INCREASE THE INLET AND OUTLET PIPE DIAMETER. MFG. PER. PE-C22.85

CAPACITIES:

LIQUID VOLUME BELOW OUTLET = 3648 GALS
AIR VOLUME ABOVE OUTLET = 350 GALS



BAFFLE DETAIL

NOTES:

- ☒ HOLD DOWN STRAP CLIP
- ▶◀ HOLD DOWN STRAP LOCATION
- TYPE "13" LIFT LUG - SD
- TYPE "13" LIFT LUG - HD

SWT G-6 (8')-4000		DATE:	1/1/2014
IAPMO SEPTIC TANK		DRAWN BY:	J.HARMON
CONTAINMENT SOLUTIONS	CAPACITY:	3,998	
	WEIGHT: DRY/WET	1550	
		REVISED:	
		DWG NUMBER:	84MSW-IS