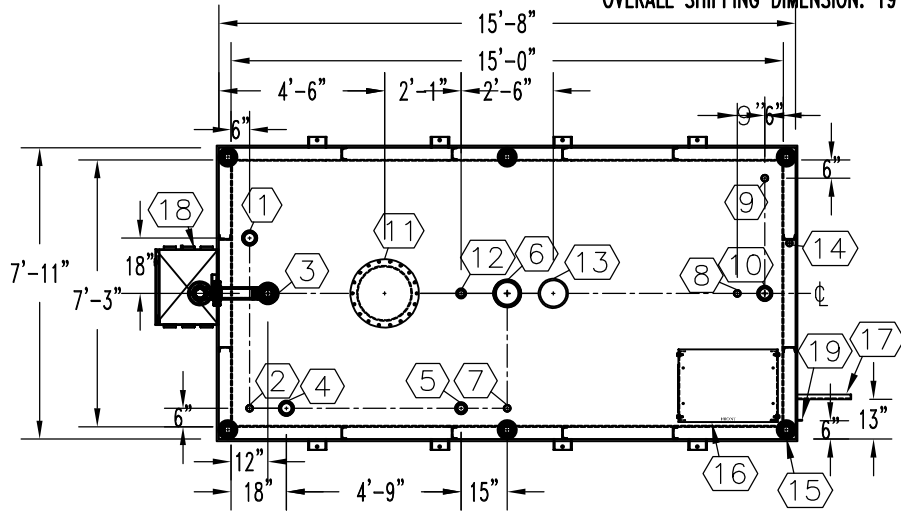


**NOTE:**

OVERALL SHIPPING DIMENSION: 19'-8" L X 8'-6" W X 9'-4" H



ITEM	SIZE	SUGGESTED FUNCTION
1	4"	PHASE 1 VAPOR RECOVERY/SPARE
2	2"	CLOCK LEVEL GAUGE
3	6"	FILL W/3" FILL LIMITER
4	4"	ELECTRONIC LEVEL GAUGE (OPTIONAL)
5	3"	PRIMARY WORKING VENT W/RISER PIPE
6	8"	PRIMARY TANK EMERGENCY VENT
7	2"	SPARE
8	2"	SUCTION PUMP
9	2"	HIGH LEVEL ALARM
10	4"	SPARE
11	18"	ABOVE LIQUID MANHOLE, DWG."MHB001"
12	2"	SECONDARY WORKING VENT
13	8"	SECONDARY CONTAINMENT EMERGENCY VENT
14	2"	SECONDARY MONITOR PIPE
15	4"	FIRE RATED MATERIAL FILL
16	N/A	9822 DISPENSER BRACKET, DWG."PBB015"
17	N/A	DISPENSER BRACKET, DWG."DSB001"
18	3" PIPE	3QBB MORRISON REMOTE BOX, DWG."SBB202"
19	2" X 2"	GROUND CLIP, DWG."MCB004"

**TANK SPECIFICATIONS**

VENTING CAPACITY: PRIMARY TANK - 312,000 CUBIC FEET PER HOUR  
 SECONDARY TANK - 354,000 CUBIC FEET PER HOUR

MATERIAL: PRIMARY TANK - 1/4" THICK

SECONDARY TANK - 3/16" THICK

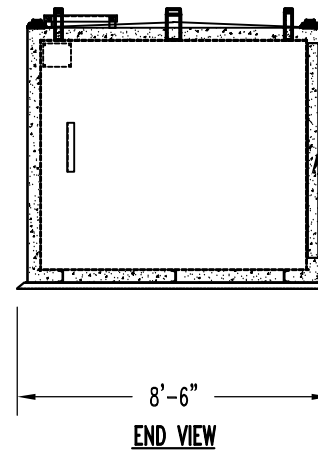
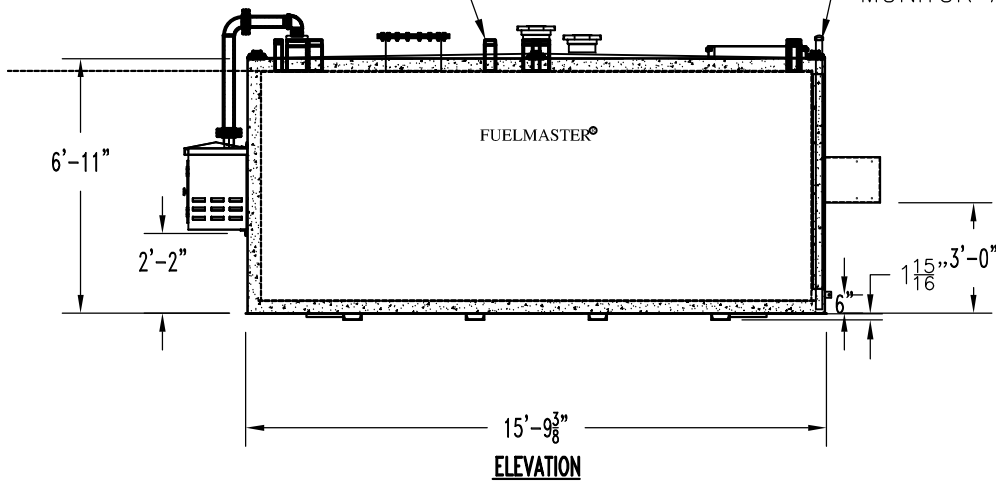
SEAL WELD ALL FITTINGS AND TANK

4" SPACE BETWEEN INNER & OUTER TANKS FILLED WITH LIGHT WEIGHT FIRE-RATED MATERIAL

THREADED CONNECTION (TYP.) SEE TOP VIEW

TOP VIEW

2" STD. PIPE FOR MONITOR ACCESS



PRODUCT CODE	GALLONS	DESCRIPTION	OVERALL SIZE	SHIP WT.
FMAA105MVS001	5,000	U/L-2085 ABOVE GROUND VAULT TANK W/FUEL SYSTEM	15'-8" L X 7'-11" W X 7'-1" H	24,500 LBS.

THIS DRAWING AND DESIGN SHOWN HEREIN IS THE PROPERTY OF CONTAINMENT SOLUTIONS. USE OR COPIES THEREOF CANNOT BE MADE WITHOUT WRITTEN CONSENT.

CUSTOMER NAME

**APPROVED** BY:

BY:

DATE:

**CONTAINMENT SOLUTIONS®**

DRAWN BY: D. ROVANG DATE DRAWN: 01-01-14

DWG NUMBER: 5103548S SCALE: 1:64

REV: B REV BY: RSO DATE: 01-01-19 SHEET: 1 OF 1