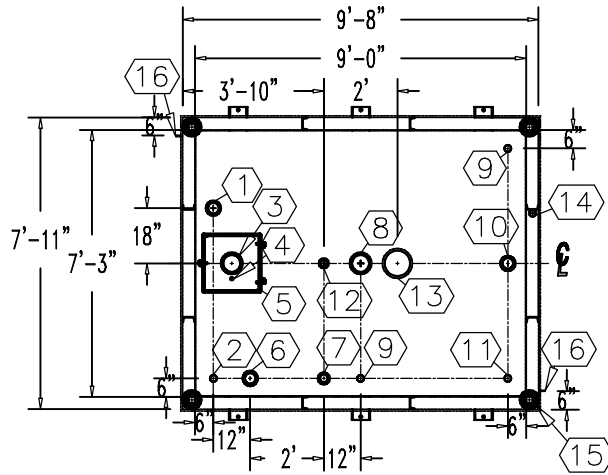


**NOTE:**  
**OVERALL SHIPPING DIMENSION: 10'-0" L X 8'-6" W X 7'-11" H**



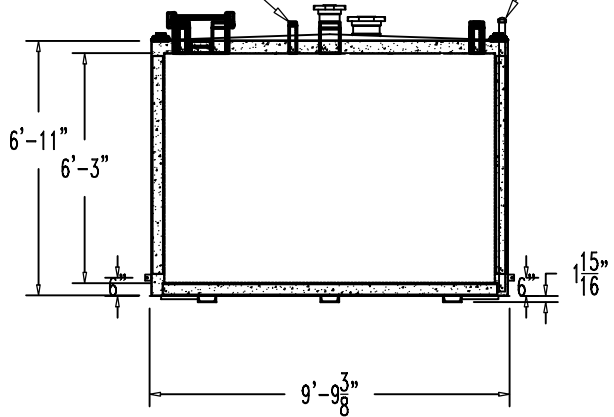
ITEM	SIZE	SUGGESTED FUNCTION
1	4"	PHASE 1 VAPOR RECOVERY/SPARE
2	2"	MECHANICAL GAUGE
3	6"	FILL
4	1/2"	DRAIN FOR SPILLBOX
5	15 GAL	SPILLBOX, DWG."SBB001"
6	4"	ELECTRONIC LEVEL GAUGE
7	3"	PRIMARY WORKING VENT
8	6"	PRIMARY TANK EMERGENCY VENT
9	2"	SPARE
10	4"	SUBMERSIBLE PUMP
11	2"	SUCTION PUMP/SPARE
12	2"	SECONDARY WORKING VENT
13	8"	SECONDARY CONTAINMENT EMERGENCY VENT
14	2"	SECONDARY MONITOR PIPE
15	4"	FIRE RATED MATERIAL FILL
16	2" X 2"	GROUND CLIP, DWG."MCB004"

**TANK SPECIFICATIONS**

VENTING CAPACITY: PRIMARY TANK - 265,000 CUBIC FEET PER HOUR  
 SECONDARY TANK - 288,000 CUBIC FEET PER HOUR  
 MATERIAL: PRIMARY TANK - 1/4" THICK  
 SECONDARY TANK - 3/16" THICK

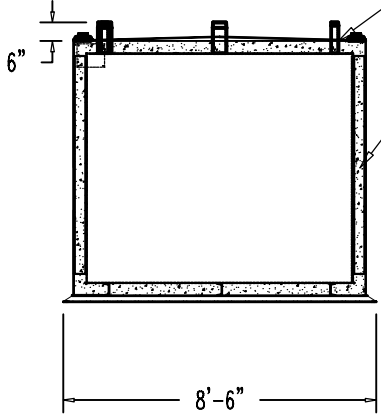
**TOP VIEW**

THREADED CONNECTION (TYP.) SEE TOP VIEW  
 2" STD. PIPE FOR MONITOR ACCESS



**ELEVATION**

SEAL WELD ALL FITTINGS AND TANK



**END VIEW**

PRODUCT CODE	GALLONS	DESCRIPTION	OVERALL SIZE	SHIP WT.
V4AA103MVS001	3,000	U/L-2085 ABOVE GROUND VAULT TANK W/SPILLBOX	9'-8" L X 7'-11" W X 7'-1" H	15,800 LBS.



THIS DRAWING AND DESIGN SHOWN HEREIN IS THE PROPERTY OF CONTAINMENT SOLUTIONS. USE OR COPIES THEREOF CANNOT BE MADE WITHOUT WRITTEN CONSENT.

CUSTOMER NAME: \_\_\_\_\_  
**APPROVED** BY: \_\_\_\_\_ DATE: \_\_\_\_\_

DRAWN BY: D. ROVANG	DATE DRAWN: 01-01-14
DWG NUMBER: 5100006	SCALE: 1:64
REV: _____	REV BY: _____
DATE: _____	SHEET: 1 OF 1