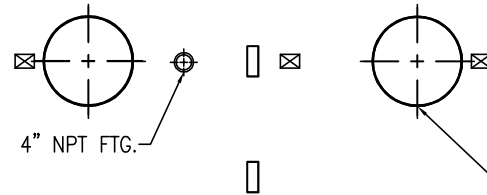


FLOWTITE PRODUCTS

SEPTIC / WASTE WATER

NOTE: CUSTOMER SUPPLIED
"ASTM C-1644" APPROVED
FLEXIBLE PIPING COUPLING
REQUIRED ON TANGENTIALLY
MTD. NOZZLES, & PIPES

SHELL CODES: 2-EXS04SD

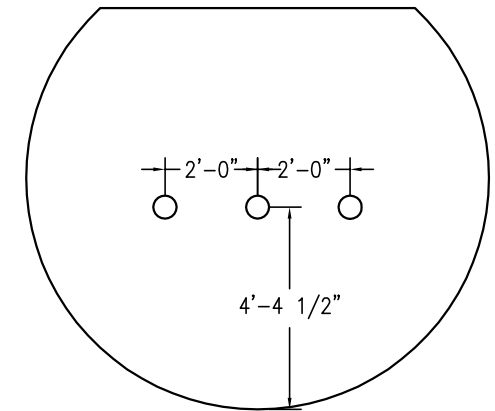
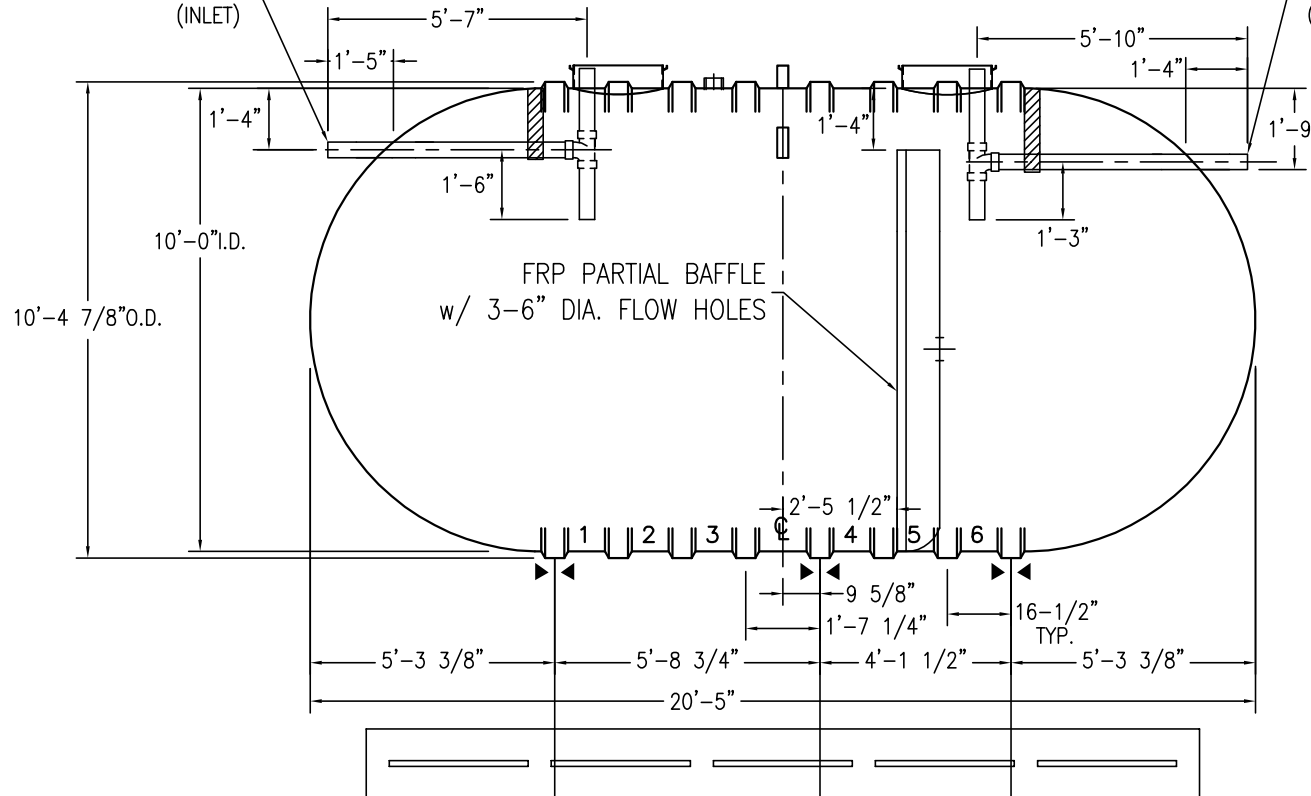


THIS IS AN IAPMO APPROVED TANK
THE ONLY CHANGE ALLOWED TO
THIS TANK IS TO INCREASE THE
INLET AND OUTLET PIPE DIAMETER.
MFG. PER. PE-C22.85

CAPACITIES:
LIQUID VOLUME BELOW OUTLET = 8,932 GALS
AIR VOLUME ABOVE OUTLET = 1,056 GALS

4" SCH-40 PVC STUB-OUT
w/SANITARY TEE & PIPE
(INLET)

4" SCH-40 PVC STUB-OUT
w/SANITARY TEE & PIPE
(OUTLET)



BAFFLE DETAIL

OPTIONAL 18"x 8"x 18' DEADMAN

NOTES:

- ☒ HOLD DOWN STRAP CLIP
- ▶◀ HOLD DOWN STRAP LOCATION
- TYPE "13" LIFT LUG - SD
- TYPE "13" LIFT LUG - HD

SWT D-6 (10')-10000		DATE: 1/1/2014
IAPMO SEPTIC TANK		DRAWN BY: J.HARMON
CONTAINMENT SOLUTIONS	CAPACITY: 9,988	REVISED:
	WEIGHT: DRY/WET 3600	DWG NUMBER: 1010MSW-IS